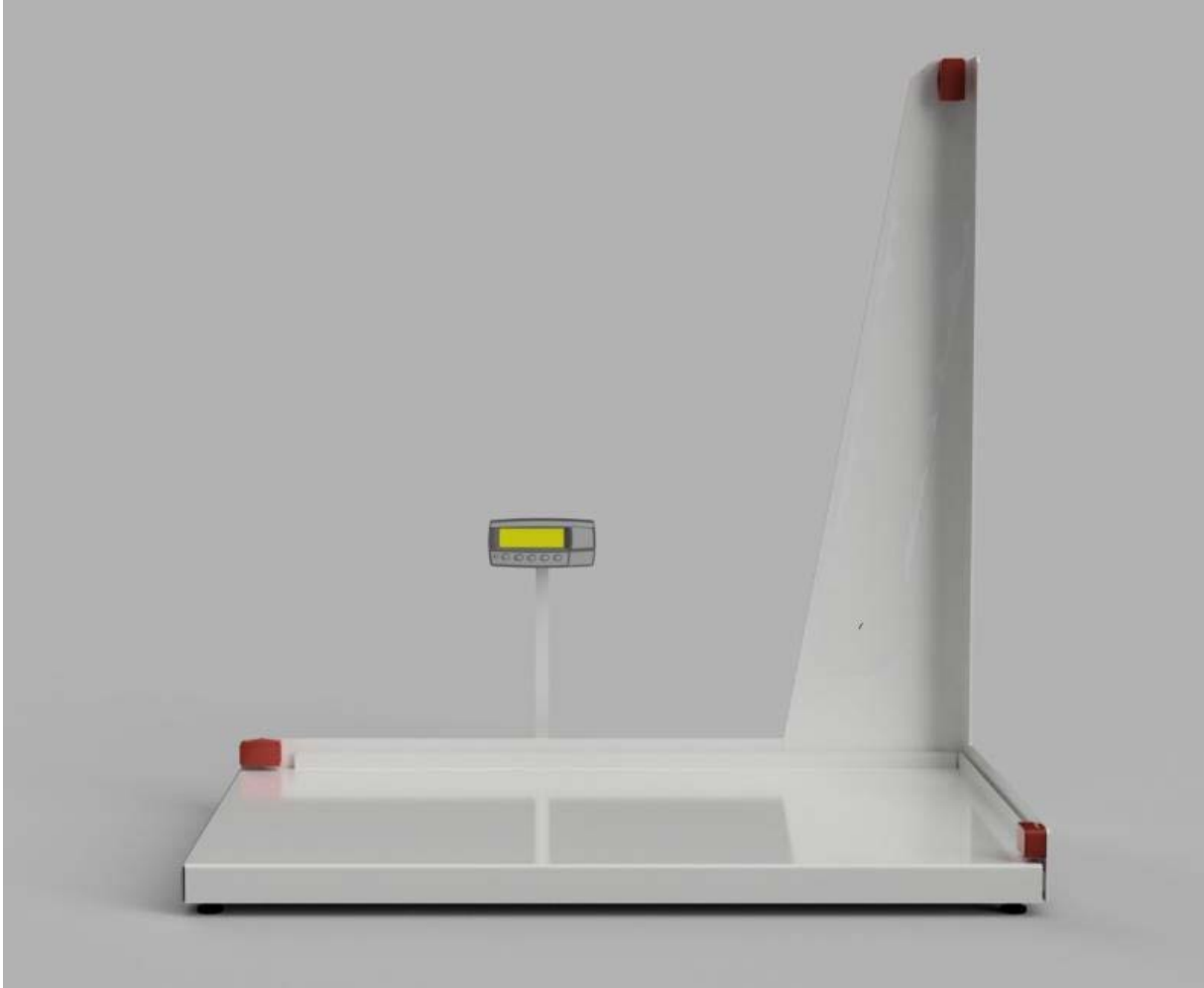


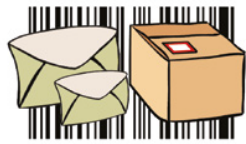
SPS 1000 Manual V 1



Operational notices:

Device should be operated under normal light condition such as in an indoor office or indoor warehouse. Unit should not be operated in direct sun light or under high intensity light sources. Highly light absorbent black boxes might interfere with measurements, recommended to use include L-brackets.

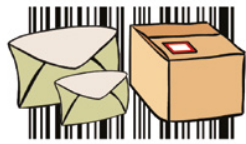
Hardware assembly instructions on page 3-6
Safety instructions on page 7
Software manual on www.dimensionalweighing.com



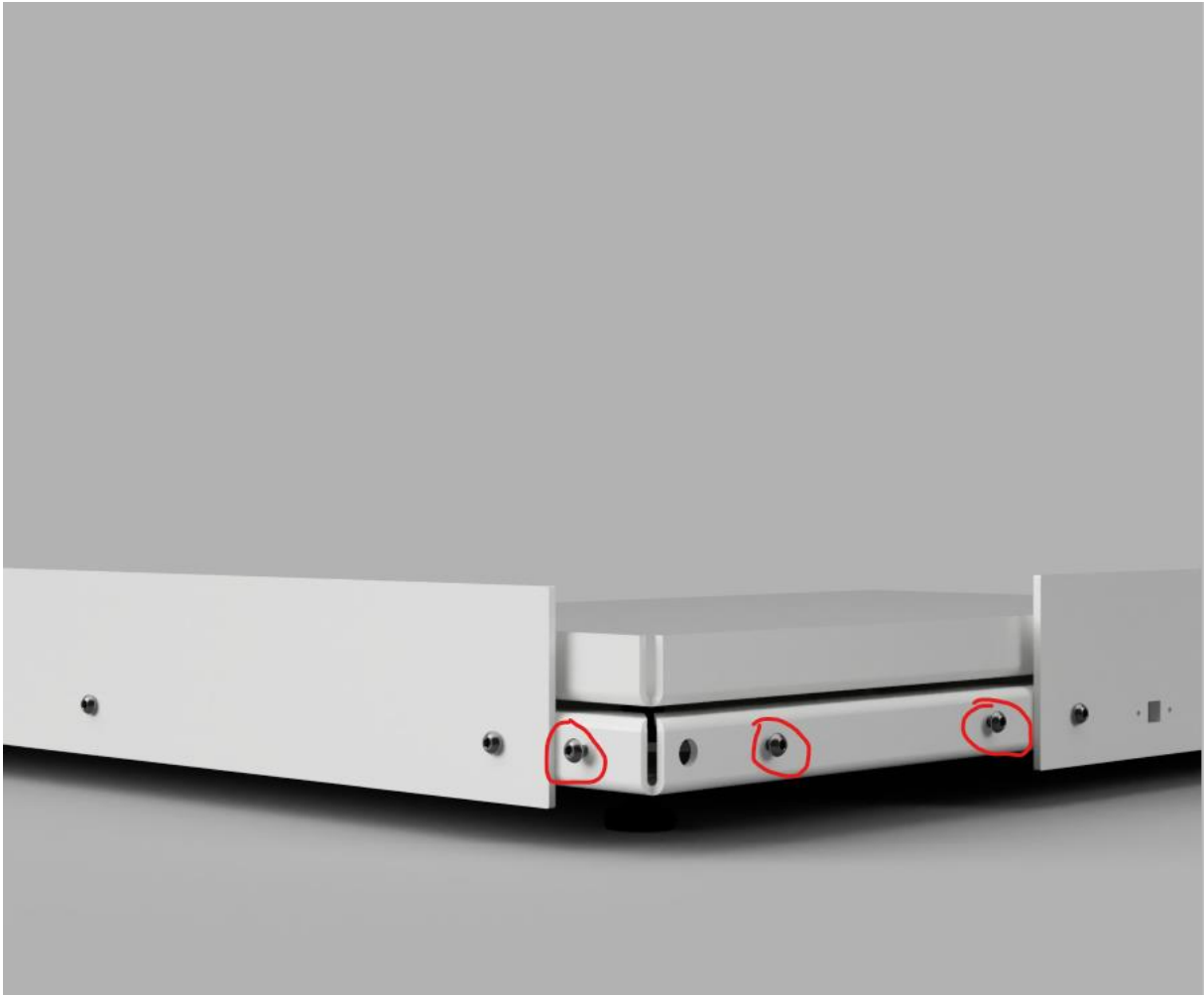
Transportation box



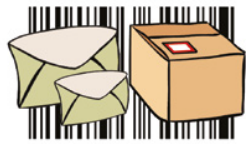
Unpack the box the unit was delivered in. Contents are the dimensional scale, USB cable, bag of screws 3xM6, 3xM5 and one allen key.



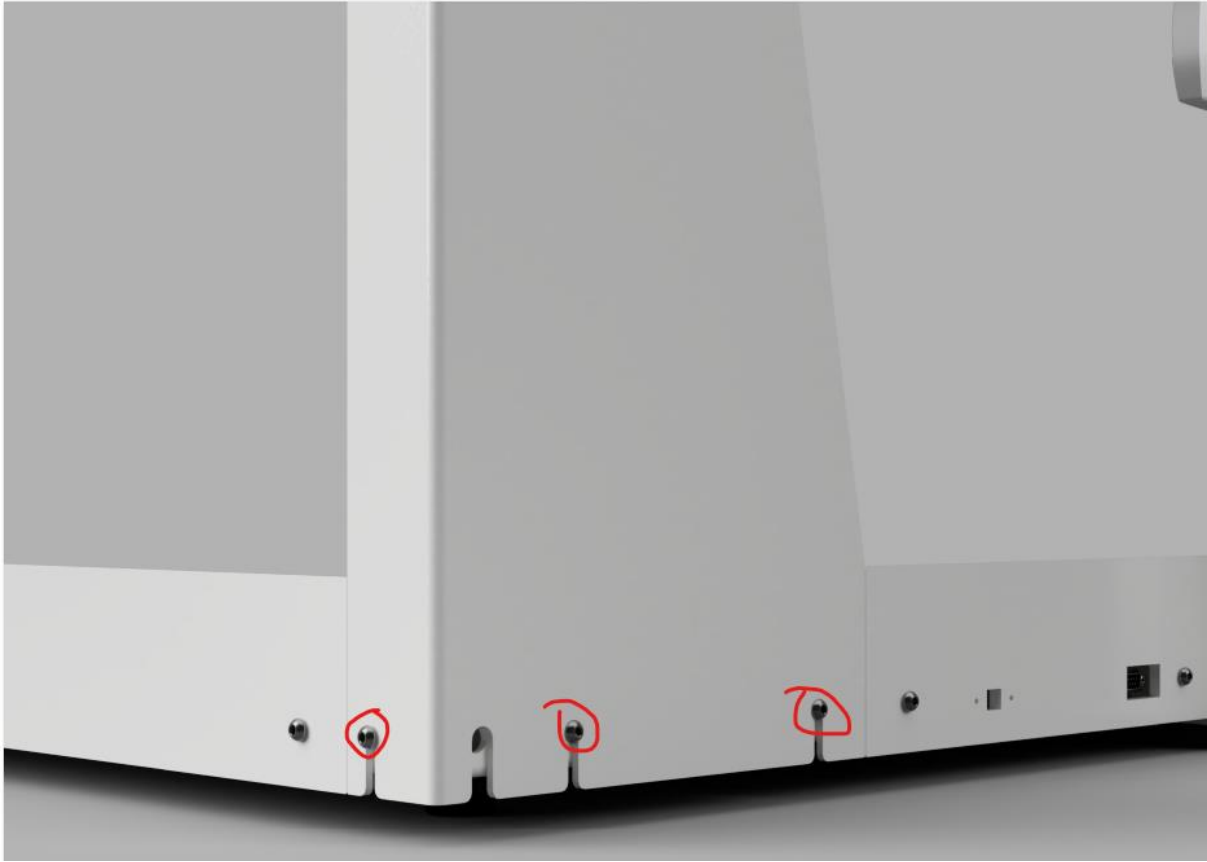
Assembly of back pice



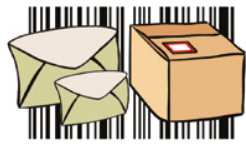
Install the 3 M6 screws as shown on image. Do not tighten. Let them extrude about 6-8mm



Assembly of back peice

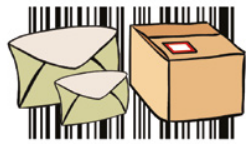


Slide the back pice down, tighten the 3 screws

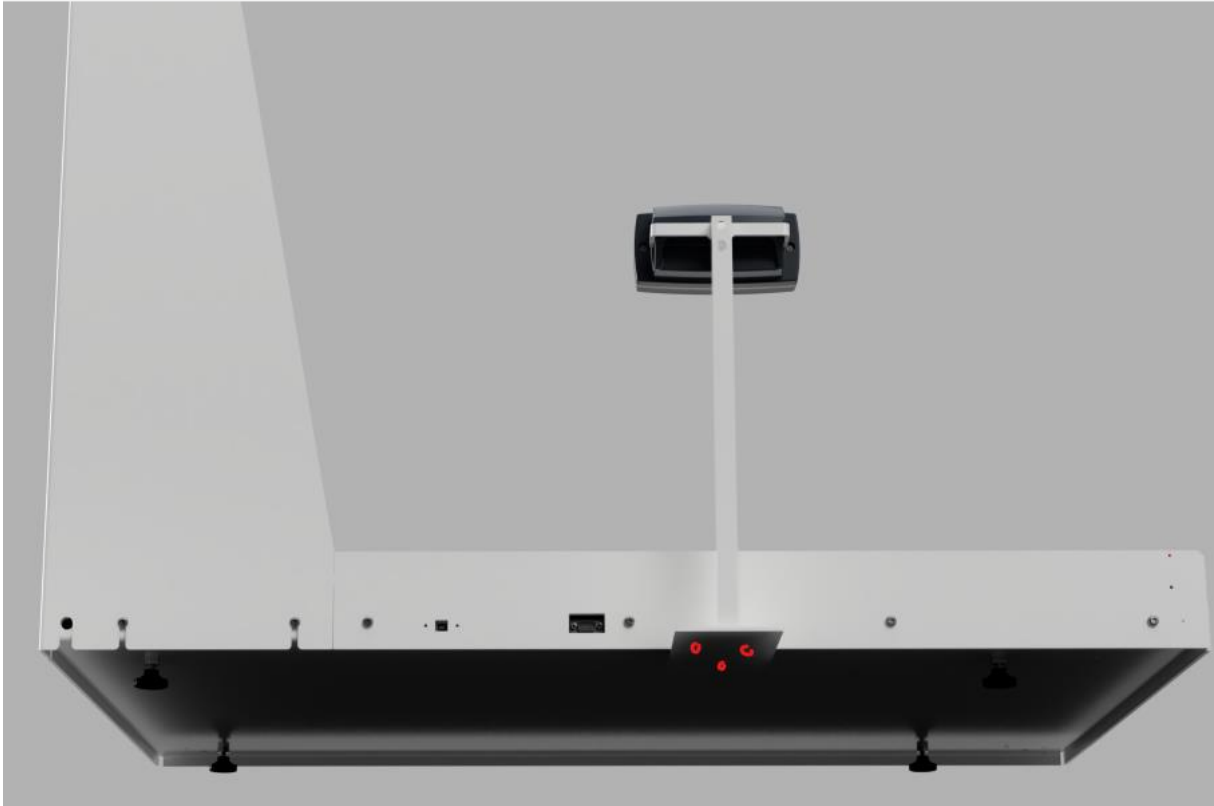


Connect the cables together and reinstall the cable management part





Install the indicator



Install the 3 M5 screws to fasten the indicator to the base of the dimension scale.

Install the USB cable and the DB9 cable from the indicator to the scale base.

SPS 1000 Laser Safety Brief

Laser classification



The Instrument produces a visible laser beam.

The instrument is Laser CLASS 2 as per IEC60825-1 : 2007

Warning

Do NOT look into the beam.

Do not shine laser on reflective surfaces.

Do not disassemble or repair without required skills.

Instrument marking.

